

S T - B A R T S

NATACHA 202



BIGCYCLING.EU





You, cyclists who like to climb, discover in these few pages what makes the list of the national challenge in St-Barts so rich.

GEOGRAPHY

MEDIA

TOURISM

SPORT

Saint-Barthélemy

Geography

Overseas

Overseas France includes the territories of the French Republic far from mainland France, located on the European continent.



The 11 inhabited “DOM-TOM” are spread across 3 continents.

In America

Saint-Pierre and Miquelon, Saint-Martin, Sint-Barts, Guadeloupe, Martinique, Guyana.

In Africa

Mayotte, Reunion

In Oceania

New Caledonia, Wallis and Futuna, French Polynesia.



CARIBBEAN and WEST INDIES

The Caribbean is a region of America that includes the Caribbean Sea, its islands and surrounding coasts.

We distinguish 5 sets:

- Central America made up of 7 states (Guatemala, Belize, Salvador, Honduras, Nicaragua, Costa Rica, Panama);
- Northern South America made up of 4 states (Colombia, Venezuela, Guyana, Suriname) and French Guiana;
- the Lucayes archipelago made up of 1 state (Bahamas) and the Turks and Caicos Islands which are British;
- the Greater Antilles made up of 4 states (Cuba, Jamaica, Haiti, Dominican Republic) and American (Puerto Rico, American Virgin Islands) and English (Cayman Islands, British Virgin Islands) possessions;
- the Lesser Antilles made up of 8 states (Saint Christopher and Nevis, Antigua and Barbuda, Dominica, Saint Lucia, Barbados, Grenada, Trinidad and Tobago, Saint Vincent and the Grenadines) and British possessions (Anguilla, Montserrat), French (Saint Martin, **Sint-Barts**, Guadeloupe, Martinique) and Dutch (Sint Maarten, Aruba, Curaçao).



The French territories are therefore:

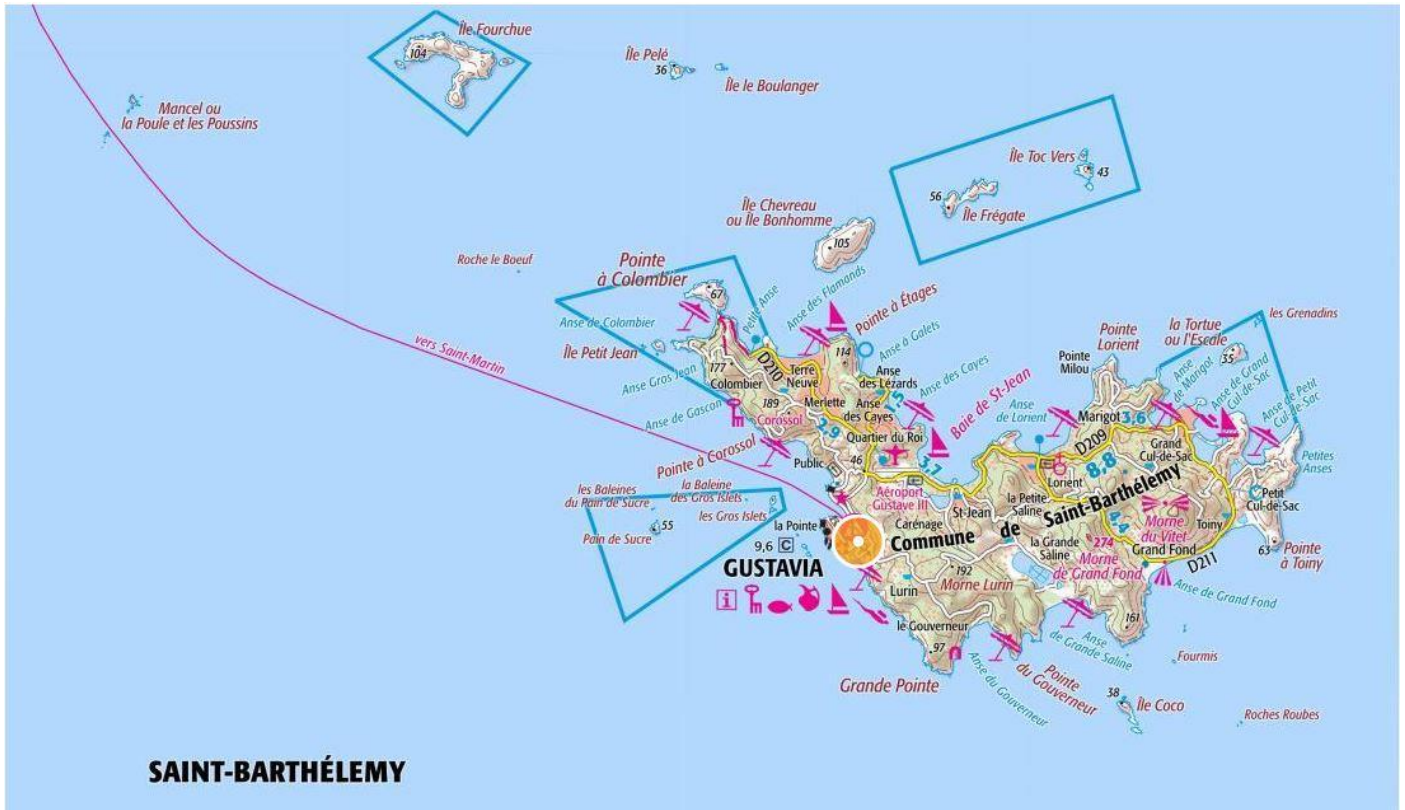
- in the Lesser Antilles: Saint Martin, **Sint-Barts**, Guadeloupe, Martinique;
- on the South American continent: Guyana

SINT-BARTS

St-Barts is an island in the north of the Lesser Antilles.
Its surface area of only 24 km² corresponds to 1/200 of an average French department.

The island of Saint-Barthélemy is part of French territory, but its status has changed.
Until July 15, 2007, it was a commune dependent on the overseas department of Guadeloupe.
Since then, it has been an overseas community attached to France without intermediary.
The island of Saint-Barthélemy is surrounded by several uninhabited and roadless islands and islets.

Gustavia is the only town (9000 inhabitants) of Saint-Barthélemy.
All other inhabited places are hamlets or neighborhoods included in the municipality.



Aerial view of Saint-Barthélemy

Relief of St-Barts

St-Barts is an island of small mountains, rugged everywhere.

It culminates at Morne de Vitet (284m).

We can distinguish 4 zones around the main mountains:

- Grande Vigie (189m) to the North-West
- Morne Lurin (192m) to the South
- Morne de Grand Fond (274m) in the East Center
- Morne de Vitet (284m) to the east.



Morne de Vitet dominates the island



The Grande Vigie at the end of the trail

Attractions of St-Barts

St-Barts is a tourist and picturesque island.

The roads will surprise the cycloclimber with some very steep passages.

The following 2 paragraphs (Tourism, Sports) detail these points.

Due to the small size of the island, a quota of **5 Natacha** summits was retained.

Tourism in St-Barts

The island of St-Barts has the particularity of having wanted to avoid mass tourism and having opted for luxury tourism since the 1960s.

This has several consequences:

- the island is a hot spot for the jet set: there are businessmen, singers, cinema and television personalities and families of extremely wealthy heirs, millionaires and billionaires docking with their luxurious yachts, sailboats and villas with swimming pools and tennis courts;
- the cost of living is very high: everyday consumer products are all imported, rents and hotel rooms are expensive, real estate is extremely expensive;
- the areas that can be visited by tourists are very limited: the neighborhoods and areas where luxury villas stand are monitored by private security companies, and are inaccessible for tourists, and even for local residents. Tourists can mainly be found in the shopping areas and streets of Gustavia. The stay of tourists with modest budgets is very short, most often, due to the very high cost of local living.

The list of celebrities who own a villa on the island or have already stayed in “Saint-Barth” is very long. We will simply mention Johnny Hallyday, whose family still has the villa, who was buried in Saint-Barthélemy on December 11, 2017, and whose grave is in the Lorient cemetery (at the foot of the northern slope of the Grand Fond road , BLM-004).



The billionaires' yachts in St-Barts



Johnny Halliday's grave

Apart from this very “people” aspect, the island of St-Barts is very picturesque.

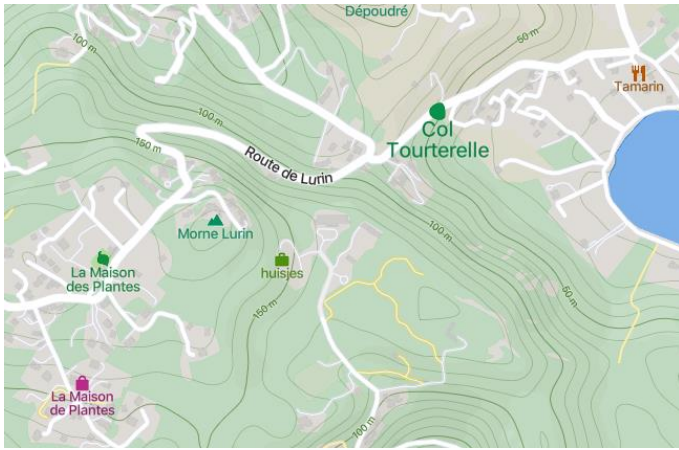
The beauty of these rustic landscapes and white sandy beaches is appreciated by tourists.

The island is surrounded by 24 coves and a bay with very varied landscapes.

It has 4 main mountains: Grande Vigie (189m) in the North-West, Morne Lurin (192m, BLM-002) in the South, Morne de Grand Fond (274m) in the Center East, Morne de Vitet (284m) in the East (approached by BLM-005 Vitet), and obviously secondary mountains: Palidor (160m, BLM-001), Morne Criquet (172m, BLM-003), Morne Rouge (159m, inaccessible by road), Morne Diaco (247m, approached by local roads).

The cyclist will find 2 listed passes there: the Col de la Tourmente (40m, in the E and S slopes of Palodor, BLM-001) and the Col Tourterelle (77m, in the N and E slopes of Morne Lurin, BLM-002) .

The Route de Grand Fond (BLM-003) culminates at an unnamed pass (116m) between Morne de Grand Fond and Morne de Vitet.



The topo map combining Col Tourterelle and Morne Lurin

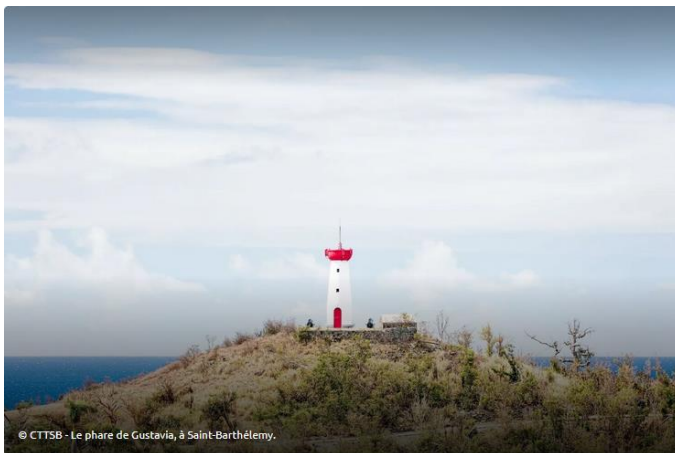


The Grand Fond road and its low walls

The small size of the island and therefore the proximity of mountains and beaches will give cyclists and hikers many beautiful panoramas.

From a heritage point of view, Saint-Barthélemy has 7 historical monuments including 6 in Gustavia (Swedish battery of Fort Gustav III, Swedish bell tower, Notre-Dame de l'Assomption church, Dinzey house, Governors' house, old presbytery) as well as the church of Lorient.

Note also the Gustavia Lighthouse and 4 Forts around the town of Gustavia, which is at the foot of the W slope of Morne Lurin (BLM-002).



The Gustavia lighthouse at the foot of Morne Lurin



And the panorama at its summit

The sporting side of the St-Barts climbs

The climbs are short. The TOP3 of the longest barely exceeds 2km

5 W Vitet	2.2 km
2 N Morne Lurin	2
2 E Morne Lurin	2

The height difference is often between 100 and 200 meters. TOP4 is completely occupied by Morne Lurin

2 W Morne Lurin	174 m
2 E Morne Lurin	174
2 N Morne Lurin	171
2 S Morne Lurin	169
5W Vitet	145



The road to Morne Lurin



...and that of Vitet

In average percentage, it is the dull Criquet which dominates the TOP3, totally above 10%.

3 W Morne Criquet	12.6%
2 W Morne Lurin	10.9
2 S Morne Lurin	10.6

In maximum percentage, we find 5 slopes above 20%, with the 24% of Vitet in the lead.

5W Vitet	24%
3 S Morne Criquet	22
5 N Vitet	22
1 W The Palidor	21
3 W Morne Criquet	21

Which ultimately gives 6 slopes exceeding 200 europoints, minimum for the red triangle:

2 E Morne Lurin	233.5 €-points
5 N Vitet	232.9
5W Vitet	222.5
2 W Morne Lurin	220
1 W The Palidor	205.7
2 S Morne Lurin	202.9



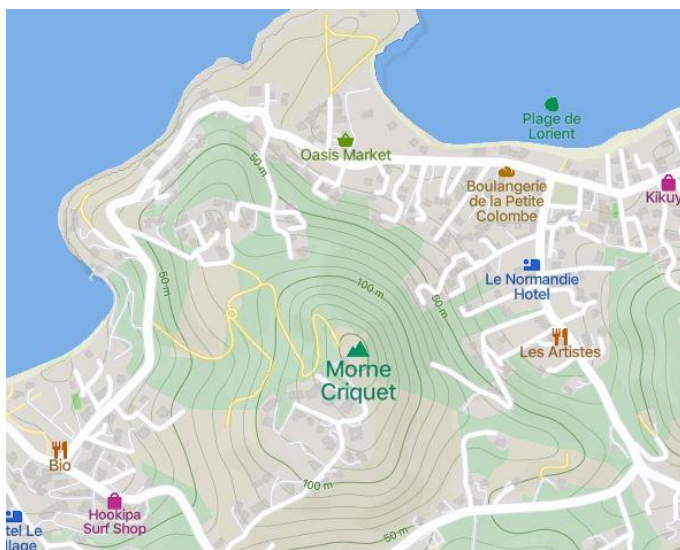
The Palidor orientation table



When the Grand Fond flies away

As for the explosive side, represented by a bomb, it took 25 to obtain a red triangle like in all the natachas. The 5 summits on this island have at least one slope beyond this limit.

3	W	Morne Criquet	35,6
3	S	Morne Criquet	33,5
5	W	Vitet	32,8
5	N	Vitet	32,7
1	W	Le Palidor	30,1
2	W	Morne Lurin	30,1
2	E	Morne Lurin	29
4	S	Grand Fond	27,9
2	S	Morne Lurin	27,6
4	N	Grand Fond	26,9



The contour lines of the Criquet



...and those of Vitet

Cycling in St-Barts

Two cyclists represent the small island, notably in international gravel races or in the Tour de Marie-Galante, Stéphane Lenoir and Fabien Husson.



Stéphane Lenoir at Big Sugar Travel in Arkansas (USA)



Fabien Husson at the Tour de Marie-Galante

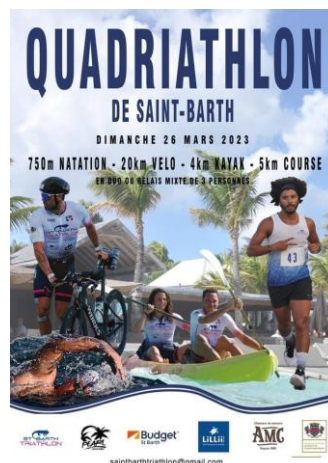
The cramped and wild territory offers few possibilities for a cycling race but on the other hand, the omnipresent sea and the playing field are a boon for the organizers of multiple events.

Thus, we can see on the island the Saint-Barth triathlon and even the Saint-Barth quadriathlon where kayaking is added as a sporting discipline to swimming, cycling and running.

In these events, there are quite a few indigenous male sports cyclists but also a large number of very good female cyclists.



The vests of the triathlon organizers



The quadriathlon poster



Men at the St-Barts triathlon



...and women at the St-Barts Quadriathlon

EDITIONS BIGCYCLING

www.bigcycling.eu